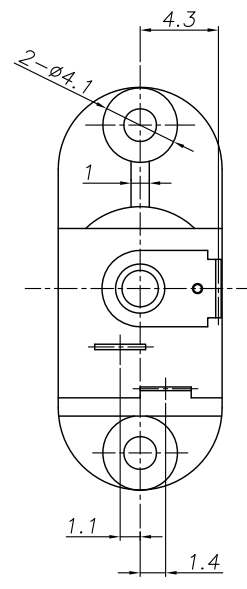
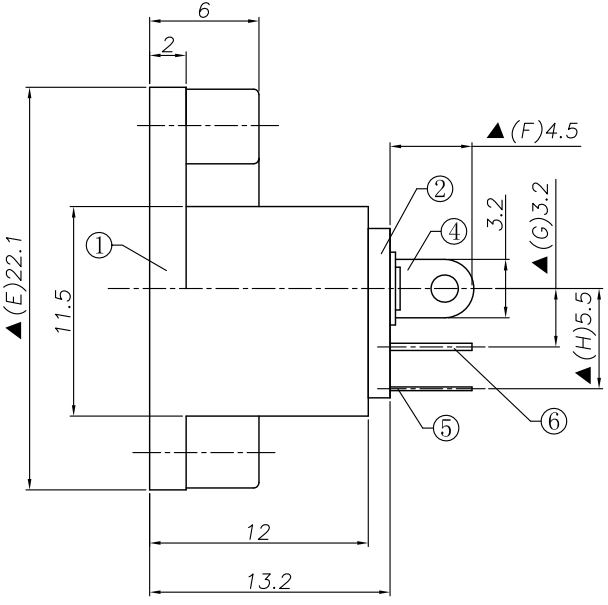
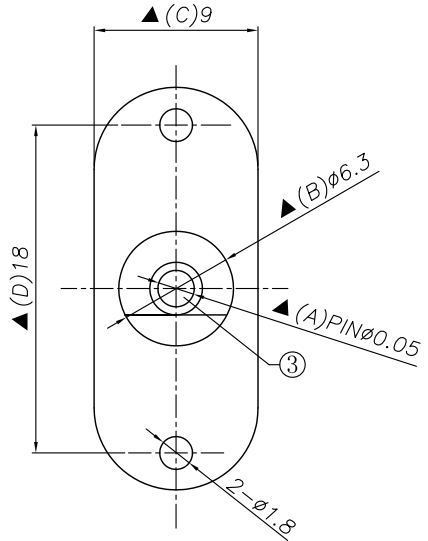
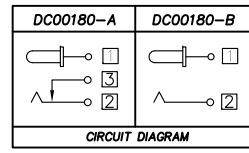


REV. LTR.	DESCRIPTION	SIGN	DATE
△	彈片材質變更為 Brass		2013.03.08.

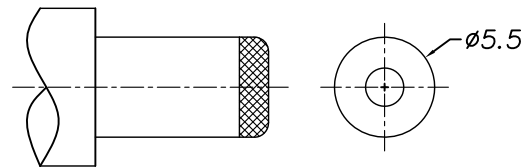
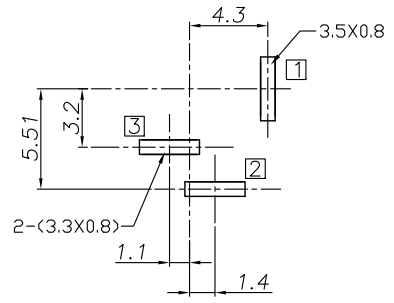


Ordering information:
 DC00180 -□ □
 (1) (2) (3)
 (1): Series No.
 (2): Schematic option: B
 (3): Center pin diameter:
 H=Ø2.0, I=Ø2.35, J=Ø2.5



Model No.	DC00180-H	DC00180-I	DC00180-J
PIN	Ø2.0	Ø2.35	Ø2.5

RECOMMENDED P. C. B. LAYOUT
 UNSPECIFIED TOLERANCE: ±0.1
 (Copper-sided view)



DC MATE PLUG

- SPECIFICATION
- Rating : DC 20V 3A ;
 - Contact resistance : ≤ 50mΩ ;
 - Insulation resistance : ≥ 100MΩ (DC500V) ;
 - Withstand voltage : 500VAC ;
 - Insertion and extraction force : 3-30N;
 - life test : 5,000 cycles;
 - Operation temperature range:-20°C~70°C;
 - Preservative temperature range:-40°C~85°C;

NO.	DESCRIPTION	QTY	MATERIAL	REMARK
⑥	Shunt terminal	1	Brass	Sn-Plating
⑤	Tip spring	1	Brass △	Sn-Plating
④	Center pin terminal	1	Brass	Sn-Plating
③	Center pin	1	Brass	Ni-Plating
②	Cover	1	PBT	
①	Housing	1	PBT	

UNIT: MM	TYPE:	MODEL NO:	PAPER NO: A4	PAGE 1 OF 1
	DC POWER JACK	DC00180-__	TOLERANCE	ANGLES
DESIGNER BY:	Zhangxiuke 2011.3.23	承永實業有限公司		
CHECK BY:		BLUE SOURCES ELECTRONICS CO.,LTD.		
APPROVED BY:				